



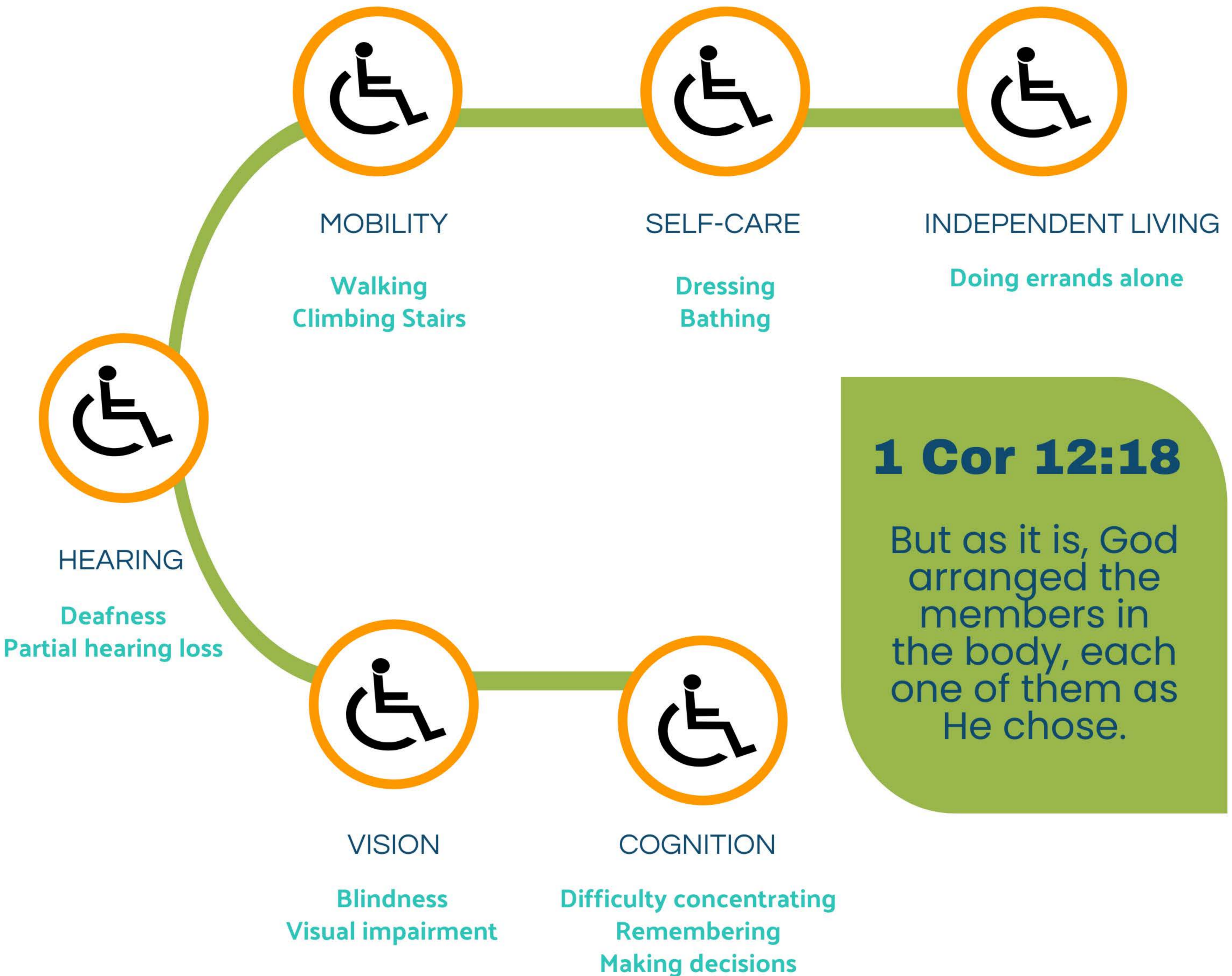
Persons with Disabilities are Indispensable.

The effects of sin inflict brokenness upon everybody, not just those with visibly diagnosed disabilities.

**DISABILITY
ISSUES**

Uniquely You

Not all disabilities are identical, and the experiences of different disabilities are as different as the individuals who experience them.



1 Cor 12:18

But as it is, God arranged the members in the body, each one of them as He chose.

WHAT TO KNOW



61 million people, about 1 in 4 persons, have an intellectual, developmental, mobility, or age-related disability.

Rom 12:5-6

...so we, though many, are one body in Christ, and individually members one of another. Having gifts that differ according to the grace given to us, let us use them...



Disability becomes more common with age, affecting about 2 in 5 adults age 65 and older.



60% of childhood hearing loss is due to preventable causes.

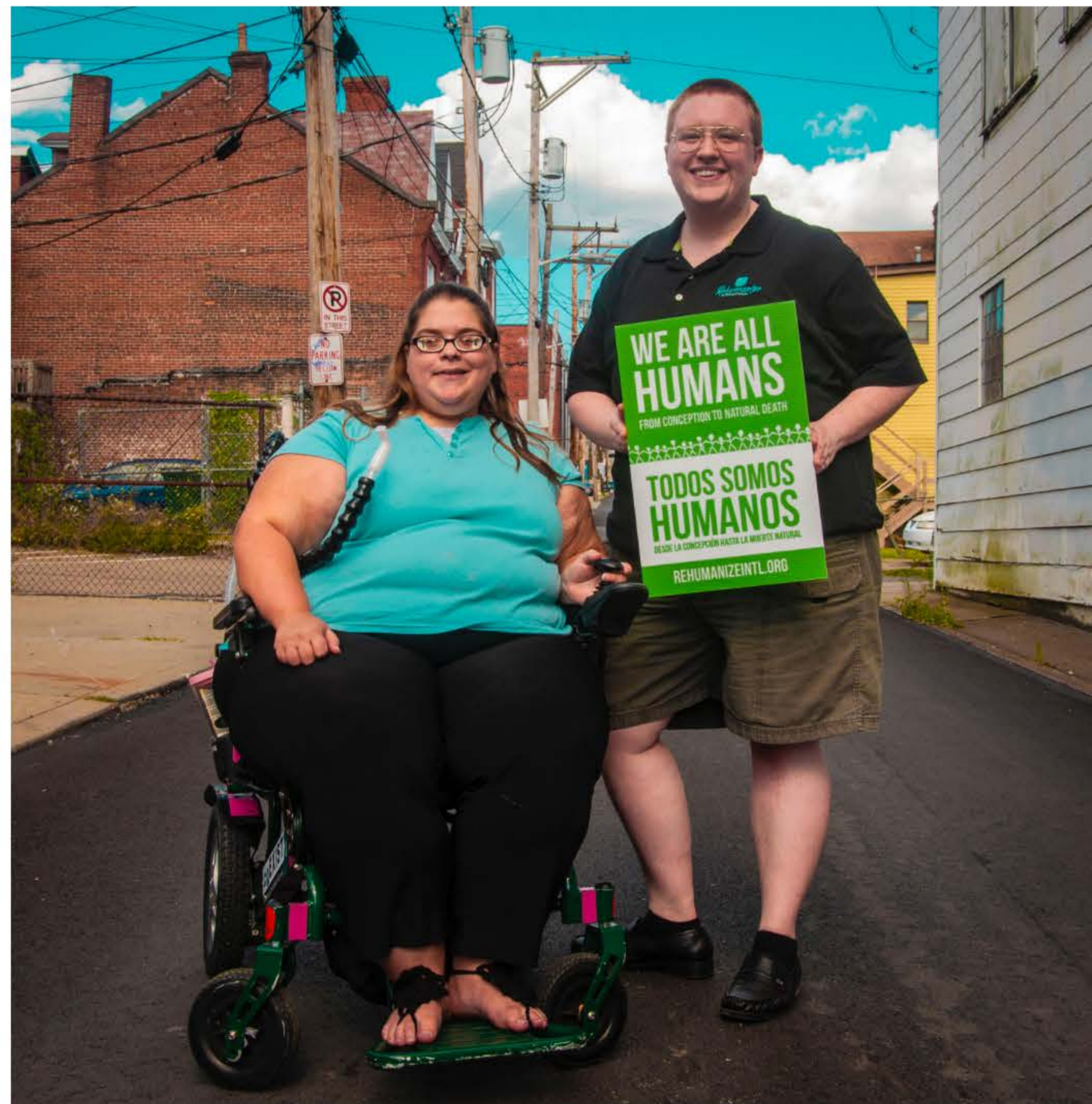
OUR CHRISTIAN RESPONSE

1 Pet 4:10

As each has received a gift, use it to serve one another, as good stewards of God's varied grace...

Loving My Neighbor

- We include people with disabilities among our authentic relationships and friendships.
- We use people-first language when speaking about persons with disabilities - Mary, who has autism, rather than "the disabled."
- We recognize the effects of sin have inflicted brokenness upon everybody, not just those with diagnosed or visible disabilities.



YOU ARE indispensable

ASK ME WHY