



2020
Lutherans For Life
Regional
Conferences



Lutherans For **Life Regional Conference**

September 26, 2020

Ruthfred Lutheran Church
Bethel Park, Pennsylvania

lutheransforlife.org

Your prayers, volunteer involvement, and financial support allow Lutherans For Life to accomplish its Gospel-centered work.

During the conference, participants will be given an additional opportunity to support the organization.

Thank you for prayerfully considering how you, your family, and your congregation can help.

COVID-19 Precautions for Conference at Ruthfred Lutheran Church:

- Sanitation – The church will be cleaned and sanitized prior to the conference. Hand sanitizers will be available at various locations.
- Masks – Masks are required when entering, moving around, or exiting the building. Please supply your own. The mask may be removed once seated in the sanctuary, but this is optional. Masks may be removed while eating in the dining areas. Should the attendees exceed 150, we may request masks be worn even while seated if adequate social distancing cannot be maintained in the sanctuary.
- Seating – The sanctuary will be used for the conference. Every other pew will be used with appropriate social distancing between individuals. Families can sit together. Attendees are requested to sit in the same seat throughout the day. If a move is necessary, please avoid sitting in a seat previously occupied. A boxed lunch will be provided and issued in the fellowship hall. There will be tables and chairs to allow for proper social distancing.



A Word from Our President

Welcome to this 2020 Lutherans For Life Regional Conference!

Staff and volunteers have worked faithfully, fearlessly, and tirelessly planning and organizing these regional conferences for the third year now, bringing the life-affirming message of LFL to as many life-affirming people as possible.

“From Invisible to Indispensable” is this year’s theme taken from 1 Corinthians 12:22, “On the contrary, the parts of the body that seem to be weaker are indispensable,” which promises to be theologically and practically packed with life-affirming lessons!

We are so thankful that God has invited you to join LFL. It is my prayer that the Holy Spirit will guide and direct the presentations and speakers to help you to be better equipped Gospel-motivated voices For Life.

Serving the Lord of Life with you,

Lynette Auch
President



Lutherans For Life Regional Conference Agenda

Ruthfred Lutheran Church, Bethel Park, PA

September 26, 2020

Registration/Refreshments	8:30 a.m. – 9:00 a.m.
Opening Devotions/Worship Rev. Steven P. Carlson including the Ruthfred Children's Choir	9:00 a.m. – 9:15 a.m.
Plenary I "Invisible to Indispensable" Rev. Scott Licht	9:15 a.m. – 10:10 a.m.
BREAK	10:10 a.m. – 10:30 a.m.
Frontline Presentation Rev. Jeff Duncan, LFL Director of Mission & Ministry	10:30 a.m. – 10:45 a.m.
2020 LFL National Essay Contest Grades 6-8 Category Winner "Pray, Protect, and Provide for People with Disabilities" Abigail Clayton – Mascoutah, Illinois	10:45 a.m. – 10:55 a.m.
Plenary II "Conceived in Rape and Incest, Blessed by Adoption, Born with Purpose" - Kristi Hofferber	10:55 a.m. – 11:50 a.m.
LCMS Video Greeting – Tiffany Manor, Life Ministry Director	11:50 a.m. – 11:55 a.m.
LUNCH/Visit Exhibits	11:55 a.m. – 12:45 p.m.
HYMN SING	12:45 p.m. – 1:00 p.m.
Plenary III "Cultivating Life in a Culture of Death: What a Global Pandemic Taught Us about Life, Death, and the Inescapable Realities around Us" Rev. Dr. Wade Mobley	1:00 p.m. – 1:55 p.m.
2020 LFL National Essay Contest Grades 9-12 Category Winner Video "Invisible and Indispensable" - Abigail Wagner – High Ridge, Missouri	1:55 p.m. – 2:00 p.m.
BREAK/Piano Solo by Will Charlton	2:00 p.m. – 2:20 p.m.
Plenary IV "The Least of These: Examining the Ethics of Embryo Experimentation" - Rev. Michael Salemink	2:20 p.m. – 3:15 p.m.
LFL Update – Rev. Michael Salemink	3:15 p.m. – 3:30 p.m.
Closing Prayer – Rev. Steven P. Carlson	3:30 p.m. – 3:35 p.m.

Conference Speakers and Topics

Rev. Scott Licht, Executive Director of Finance and Operations of LFL

Title: “Invisible to Indispensable”

Overview: God doesn’t make spare parts. He has a vocation for ALL people regardless of their age, stage, ability, or life experience. Let’s look together at how indispensable everyone is, including those who may be “invisible” within our church and society at large.

Rev. Michael Salemink, Executive Director of Mission & Ministry of LFL

Title: “The Least of These: Examining the Ethics of Embryo Experimentation”

Overview: Learn to understand stem cell research, in vitro fertilization (and other assistive reproductive technologies), germ-line genetic editing, mitochondrial replacement therapy (three-parent embryos), ectogenesis (artificial wombs), vaccine production, and human cloning. We’ll consider what makes an embryo a member of the human race and reflect on how these biomedical technologies offer opportunities for confessing how Christ’s divine love treasures every human being.

Kristi Hofferber, Social worker and member of our LFL Board of Directors

Title: “Conceived in Rape and Incest, Blessed by Adoption, Born with Purpose!”

Overview: Kristi is a pro-life and adoption advocate who shares a message about the value of ALL lives. She speaks about how the gift of adoption saved her life and brought tremendous joy to her adoptive family, as well as her experience of learning just over a decade ago about her own traumatic conception.

Rev. Dr. Wade Mobley, President of the Free Lutheran Bible College and Seminary

Title: “Cultivating Life in a Culture of Death: What a Global Pandemic Taught Us about Life, Death, and the Inescapable Realities around Us”

Overview: Cultivating our culture rather than castigating or capitulating. Tending our own plot, we have weeds—Pharisees who celebrate their own “righteousness.” It’s our job to address our lack thereof and turn to Christ for our remedy. We need to plant and tend the seeds, the miracle of life and growth. And we wait patiently for the harvest. Make abortion unthinkable. It became thinkable while illegal—legislation alone cannot be our aim. Bear fruit in due season and the necessity of investing in the single soul.

Conference Speaker Bios



Rev. Scott Licht grew up in New Ulm, Minnesota, and was raised in the Wisconsin Synod. He graduated from Martin Luther Preparatory School, Northwestern College (the WELS pastor-training college), and attended Wisconsin Lutheran Seminary for a short time. In 2005, he earned an MBA and a Master of Science in Information Systems from Iowa State University. Scott worked for Burke Corporation in Nevada, Iowa, as the information technology manager and supply chain manager. He began his work with LFL in 2012 as national director. His true passion, however, is fulfilled in his weekend job—pastor of Shepherd of the Prairie Lutheran Church in Huxley, Iowa. They are a mission congregation rostered with the Lutheran Congregations in Mission to Christ (LCMC) and the North American Lutheran Church (NALC). Scott's role at Lutherans For Life allows him to combine his business experience with his passion for serving our Lord of Life. Scott has an adult daughter in the Des Moines area and one daughter, son-in-law, and grandson near Colfax, Iowa. He and his wife, Sue, live near Huxley, Iowa, with three horses and a cat. Sue also has three adult daughters. Scott says, "There is never a lack of things to do, and I give thanks for how richly God has blessed me. I enjoy serving Him through the mission of Lutherans For Life, and I would ask for your prayers as we continue to 'equip Lutherans to be Gospel-motivated voices For Life.'"



Rev. Michael W. Salemink began serving as executive director-elect of Lutherans For Life in August 2015 and became executive director on January 1, 2016. He received a BA in theology from Concordia University Chicago, River Forest, Illinois, in 1999 and a Master of Divinity from Concordia Theological Seminary, Fort Wayne, Indiana, in 2003. He has served as pastor of St. John's Lutheran Church, Webster, Minnesota, (2003-2005), and as associate pastor of St. James Lutheran Church and School in Lafayette, Indiana (2005-2015). Pastor Salemink and his wife, Heather, have been married since 2000 and reside in St. Louis, Missouri, where they attend Immanuel Lutheran Church, Olivette, with their three sons: Christian, Nathan, and Luke.



Kristi Hofferber is a pro-life and adoption advocate who shares a message about the value of ALL lives. She speaks about how the gift of adoption saved her life and brought tremendous joy to her adoptive family, as well as learning just over a decade ago about her own traumatic conception. After learning about her own traumatic conception, Kristi was compelled to help others and left a ten-year career to go back to school to obtain her master's degree in social work. She is currently the executive director of a faith-based non-profit organization in southern Illinois and also travels to share her life-affirming story of an unthinkable beginning to a life with purpose. She is an adoptee and wife of an adoptee, and together they have two adopted children. They are a family stitched together by God's design and for His purpose.

Conference Speaker Bios



Rev. Dr. Wade Mobley lives in Plymouth, Minnesota, where he has served as president of the Free Lutheran Bible College and Seminary (flbc.edu) since 2015. Along with leadership of the Bible College and Seminary, Dr. Mobley teaches apologetics, Christian thought, leadership, and preaching in the two programs. Before joining the Bible College and Seminary, he served from 2003-2014 as pastor of Living Word Free Lutheran Church in Sioux Falls, South Dakota. Dr. Mobley is married to his wife of 20 years, Michele, and has two children, Hannah (11) and Benjamin (10). Dr. Mobley earned a Doctor of Ministry degree at Concordia Theological Seminary–Ft. Wayne in 2020, a Master’s of Divinity from the Free Lutheran Seminary in 2003, and a Bachelor’s degree in Ancient History from the University of Northwestern-St. Paul in 1999. He has additional studies at the International Academy of Apologetics, Evangelism, and Human Rights in Strasbourg, France, and four years of study in math, physics, engineering, and physical education at South Dakota State University in Brookings, South Dakota.

2020 LFL Essay Winners Grade 6-8



LFL NATIONAL WINNER Grade 6-8

Abigail Clayton
Zion Lutheran Church, Mascoutah, IL
**Essay Title: “Pray, Protect, and Provide
for People with Disabilities”**



WISCONSIN Grade 6-8 Winner

Mary Stoebel
First Immanuel Lutheran Church & School
Cedarburg, Wisconsin



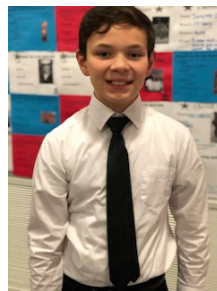
INDIANA Grade 6-8 Winner

Lillian Hildebrand
St. Paul's Lutheran Church and School
Fort Wayne, Indiana



SOUTH DAKOTA Grade 6-8 Winner

Olivia Brown
Zion Lutheran Church
Mitchell, South Dakota



MISSOURI Grade 6-8 Winner National Second Place Winner

Sam Arroyo
Immanuel Lutheran School
St. Charles, Missouri



MINNESOTA Grade 6-8 Winner

Reese Merritt
St. John's Lutheran School
Chaska, Minnesota



TEXAS Grade 6-8 Winner

Jenna Farrier
Crown of Life Lutheran School
Colleyville, Texas



NON-FEDERATION Grade 6-8 Winner

David Wiechec
Trinity Lutheran School
Joppa, Maryland

2020 LFL Essay Winners Grade 9-12



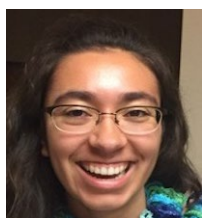
LFL NATIONAL WINNER Grade 9-12

Abigail Wagner

Hope Lutheran Church

High Ridge, Missouri

Essay Title: "Invisible and Indispensable"



NON-FEDERATION Grade 9-12 Winner

National Second Place Winner

Nicole Rodriguez

Wittenberg Academy – Online Lutheran Edu.

Mt. Olive Lutheran Church, Billings, Montana



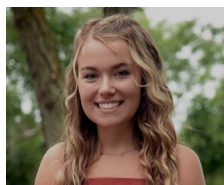
TEXAS Grade 9-12 Winner

Tabitha Waiser

Lutheran High North

Our Savior Lutheran Church

Houston, Texas



SOUTH DAKOTA Grade 9-12 Winner

Abigail Buchmann

Zion Lutheran Church

Mitchell, South Dakota



MINNESOTA Grade 9-12 Winner

Grace MacPherson

Mt. Olive Lutheran Church

Mankato, Minnesota



ILLINOIS Grade 9-12 Winner

Matthew Clayton

Zion Lutheran Church

Mascoutah, Illinois



NEBRASKA Grade 9-12 Winner

Emily Loseke

St. John's Lutheran Church

Columbus, Nebraska



INDIANA Grade 9-12 Winner

Lillian Van Houten

Lutheran High School of Indianapolis

Indianapolis, Indiana

A Special Thank You to ...

- Ruthfred Lutheran Church for providing their facilities to LFL in order to conduct this LFL Regional Conference in Bethel Park, Pennsylvania. Their hospitality is extremely appreciated.
- Rev. Steve P. Carlson and Rev. Bryce C. McMinn for supporting the efforts to organize and carry out this LFL Regional Conference at Ruthfred Lutheran Church.
- Will Charlton and the Board of Elders for the assistance in organizing and fulfilling our life ministry through this conference.
- Children's choir and their director for bringing the joy of music to our opening devotions.
- Frederick Schell for leading us in song with his uplifting organ music.
- Andrew Vogel and David Compel for making it possible to live stream and use the church's great technology throughout the day.
- Pat Lutz for her willingness to keep everyone refreshed with coffee, a much needed commodity.
- Steve and Peg Cox in making our lunches possible so everyone will be physically nourished as we partake of our spiritual nourishment throughout the day.
- Rev. Michael Salemink, Executive Director of Mission and Ministry of LFL, for his leadership and dedication to For Life work and for his enthusiasm and desire to lead our mission of equipping Lutherans to be voices For Life.
- Rev. Scott Licht, Executive Director of Finance and Operations of LFL, for his continued leadership, technological expertise, and overall organizational vision, keeping the organization focused.
- Virginia Flo, LFL National Conference Director and Regional Director of Minnesota, for coordinating the LFL Regional Conferences.
- Lowell Highby, LFL Director of Communications, for promoting and communicating conference details to all of our LFL constituents.
- Jerilyn Richard for maintaining all of the registration information, promotional efforts, and assisting at the conference.
- Rev. Jeffrey Duncan, Mission and Ministry Director of LFL, for his work in promoting and encouraging the Frontline ministries.
- Kim Nessa for her work managing the financial details and assisting at the conference.
- Jan Nessa for printing and shipping conference materials and her willingness to help wherever needed when our LFL members call the national office for help.
- Katie Friedrich for her dedication in keeping our daily activity recorded and up to date.
- Michelle Bauman, Y4Life Director, for her work in developing our youth life ministry.
- Deaconess Chrissie Gillet, PsyD, Word of Hope Director, for her counseling efforts in protecting life.
- Dr. Barbara Geistfeld, Regional Director of Texas, for her For Life work in Texas.
- Lynette Auch, LFL National President, and the entire LFL Board of Directors for their faithful leadership.
- The LFL Council of Federation Presidents who keeps LFL active and moving forward in our State Federations and the Frontline.
- Our Life Teams and Life Chapters who work so diligently every day to affirm life in so many God-pleasing ways.
- All of our LFL staff for their efforts in all aspects of LFL's ministry.
- All of the conference speakers for providing enlightening presentations on various life topics.
- All of the exhibitors who made an investment of time and money to share their For Life work.
- All of the conference attendees for helping to continue life-affirming work in their churches and communities and for attending and supporting our LFL life-affirming ministry.
- All of the sponsors and ongoing donors who support LFL with their financial gifts in order to sustain our work throughout the year.

Thank You to Our Conference Exhibitors ...

Pennsylvania Pro-Life Federation

Bonnie Finnerty

Education Director

4800 Jonestown Rd., Ste. 102

Harrisburg, PA 17109-1741

717.541.0034

lifelines@paprolife.org

Lutherans For Life Pittsburgh Life Chapter #255

Rev. Dr. Douglas H. Spittel & Mrs. Leigh A. Spittel

535 N. Neville Street

Pittsburgh, PA 15213

412.606.1151

dspittel@gmail.com

LCMS Life Ministry

Deaconess Tiffany Manor

Director of Life Ministry

1333 S. Kirkwood Rd.

St. Louis, MO 63122

1.800.248.1930 ext. 1085

314.996.1085 (direct)

tiffany.manor@lcms.org

Promise of Life Network

Sarah Bowen

P.O. Box 353, 247 S. Main Street

Slippery Rock, PA 16057

724.794.3325

sarah@alphaomegacenter.org

www.sarahmbowen.com

Lutherans For Life

888.364.LIFE (5433) • 515.382.2077

info@lutheransforlife.org

lutheransforlife.org

Become a Member of Lutherans For Life ...

Membership in Lutherans For Life will help deepen your commitment to serving the Lord of Life. Membership makes you an active partner in the mission of LFL on a regular basis. Ongoing, regular support is both a way of declaring commitment and developing commitment. Your partnership will help expand our mission of “witnessing to the sanctity of human life, through education, based on the Word of God.”

Members of Lutherans For Life Receive:

- LFL’s quarterly journal, *LifeDate*, at no cost to you—keeping you informed on all the life issues.
- An initial membership packet that will help you grow in your understanding of the mission, message, and manner of LFL.
- An official membership card.
- Semiannual mailings updating you on new materials.
- An annual report to help you see how your gifts are being used.
- Sponsor members, who give monthly gifts, receive a letter from the executive director each month giving some devotional thoughts, comments on pertinent issues, and updates on what is happening at the national office.

These items will help you stay connected. Through this ongoing connection you will:

- Be reminded of how the Gospel of Jesus Christ relates to these issues.
- Grow in your faith as you see how God’s Word changes lives.
- Keep informed about what’s going on at the national office.
- Keep up to date on the latest life issues.
- Become better equipped to do more to make a difference in your congregation and community.
- Receive encouragement as you realize you are partnering with your fellow members all across the country.
- Learn about becoming involved at the local and/or state level of LFL.

lutheransforlife.org/about

National Lutherans For Life Staff

Rev. Michael W. Salemink – Executive
Director of Mission and Ministry
Rev. Scott Licht – Executive Director of
Finance and Operations
Lowell J. Highby – Director of
Communications
Rev. Jeff Duncan – Mission and Ministry
Director
Michelle Bauman – Director of Y4Life
Jerilyn Richard – Data Analyst
Kim Nessa – Accountant
Jan Nessa – Office Clerk
Katie Friedrich – Office Assistant
Deaconess Chrissie Gillet, PsyD –
Director of Word of Hope
Dr. Barb Geistfeld – Regional Director of Texas
Virginia Flo – Regional Director of Minnesota
and National Conference Director

National LFL Board of Directors

Lynette Auch, President – Lesterville, South
Dakota
Stephenie Hovland, Vice President – Portage,
Wisconsin
Sheila Page, DO, Secretary – Aledo, Texas
Ronald L. Soule, Treasurer – Mason,
Michigan
Diane Albers, State Representative –
St. Louis, Missouri
Rev. Chris Brademeyer, State Representative –
Oakes, North Dakota
Bethany Campbell – Fort Wayne, Indiana
Rev. Dr. Dennis Di Mauro – Herndon, Virginia
Col. John Eidsmoe – Pike Road, Alabama
Rev. Everette Greene – Cincinnati, Ohio
Hilary Haak – St. Louis, Missouri
Donna Harrison, MD – Eau Claire, Michigan
Kristi Hofferber – Hoffman, Illinois
Diana Vaughn – Ponca City, Oklahoma

State Federation Presidents

Rev. David Bottorff, Illinois – Bourbonnais
Katie Willman, Indiana – Marion
Rev. Richard Salcido, Iowa – Ida Grove
Jeanne Mackay, Kansas – Lenexa
Rev. Paul Clark, Michigan – Fowler
Diane Albers, Missouri – St. Louis
Berniece Stulc, Montana – Belgrade
Bob Saeger, Nebraska – Waco
Rev. Chris Brademeyer, North Dakota –
Oakes
Kimberlea Lessman, South Dakota –
Plankinton
Rev. Doug Reinders, Wisconsin – Fremont

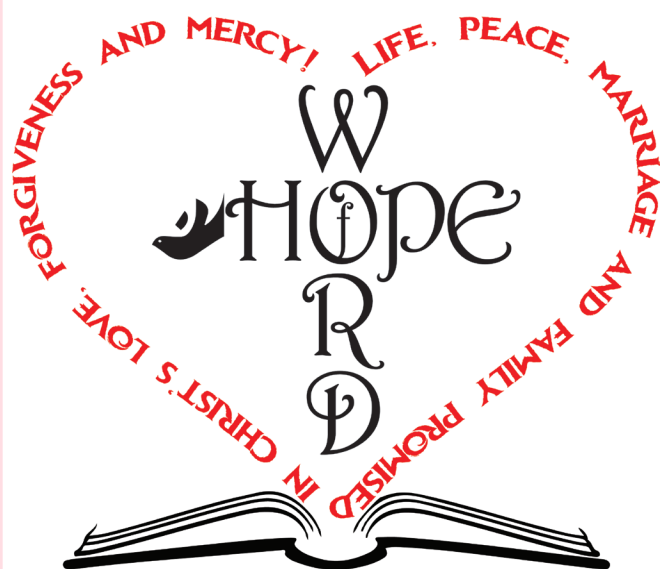
Lutherans For Life
1101 5th Street
Nevada, IA 50201-1816

info@lutheransforlife.org
lutheransforlife.org
888.364.LIFE (5433) or 515.382.2077

LFL Business Hours:
Monday-Friday, 9:00 a.m. to 3:00 p.m. CDT.
Hours subject to staff availability.

Since 1973: 61,628,584 abortions in America

Source: www.nationalrighttolifefornews.org/2020/07/abortion-statistics-united-states-data-and-trends-4



For those who have had an abortion—
there is a **Word of Hope** for
broken hearts.

Call 888.217.8679 or go to
www.word-of-hope.org.

Word of Hope is confidential and
caring.

Word of Hope is a ministry of
Lutherans For **Life**.

I'm **4Life** ... Now what?



Become a **Y4Life** Messenger • y4life.org



FRONTLINE CALL

For all Lutherans For Life Frontline Volunteers!



Join in on the Frontline call to get LFL updates and new project ideas.

When: Monday, October 12, 2020 – 5:00 p.m. PDT, 6:00 p.m. MDT, 7:00 p.m. CDT, 8:00 p.m. EDT

What: There will be a devotion, activity update, life project ideas, and Q & A.

CONNECT: Dial: 646-876-9923, Meeting ID: 816 8698 9871, Passcode: 953488

Online: <https://us02web.zoom.us/j/81686989871>.

lutheransforlife.org/grassroots



Lutherans For Life

Bible-based and Gospel-focused
materials for all ages on:

Abortion • Adoption • Bioethics
Creation • End of Life
Family Living • Post-Abortion Healing
Fetal Development • Sexual Purity

Equipping Lutherans to be Gospel-motivated voices For Life

[illegible]